

Terminator MILLHOG®

I.D. Clamping Pipe Beveling tool
8.75" I.D. to 36" O.D.
222.25 mm I.D. to 914.4 mm O.D.

Portable, easy to align and secure to heavy wall pipe up to 36" O.D.

Key Features

- Rigidly clamps to pipe up to 36"
- Pneumatic or hydraulic motor choices
- 8 sets of clamp ribs and pads and 2 wedges cover entire range
- Formed tool bits can be used for m.w.t. up to 2.5"
- Preps all pipe alloys
- Bevels any angle of weld prep
- Simple to operate
- Patented safety chain and dual spring hanger makes tool alignment easy and safe
- Available I.D. tracker, adjustable height facing and tool posts with preset angles
- Sliding tool post is simple to adjust and easy to secure

The patented Dual Spring Hanger and Safety Chain provide a perceptible feel that the tool is aligned to the pipe as the clamps tighten. The safety chain prevents the possibility of over extending the spring and provides a failsafe catch should the springs fail.



The Terminator MILLHOG® Bevels all pipe alloys at any angle for precision fit-up on wall thicknesses up to 2.5" (63.5 mm) using formed tool bits.

Rugged, built for the toughest applications

The Terminator MILLHOG® is a ruggedly constructed precision pipe beveling machine for performing weld joint bevels at any angle on pipe ends up to 36".

Built with state of the art materials that are precision machined, heat treated and hardened, the Terminator is designed to provide years of trouble free service on the toughest applications.

A gear box torque multiplier can be added that doubles the torque and slows the rpm which permits the cutter blade to get under the material and pull a thick chip on alloys prone to work hardening such as stainless, duplex and other super alloys.

The included safety chain spring hanger permits the Terminator to be safely and easily aligned and secured square to the pipe. The available I.D. tracker creates precision symmetrical bevels on out of round pipe at any angle and formed tool bits are available for pipe with wall thicknesses up to 2.5".



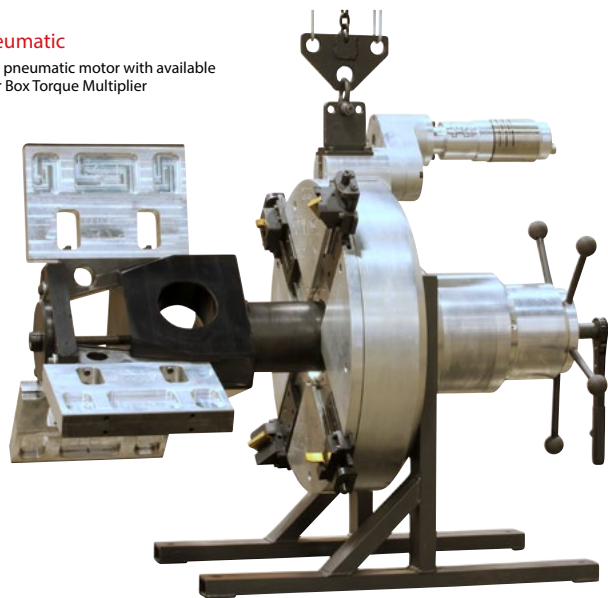
The I.D. tracker is ideal for end preps that require a consistent bevel on pipe with varying wall thickness.



Compound bevels of 37.5° x 10° can be achieved with formed cutters.

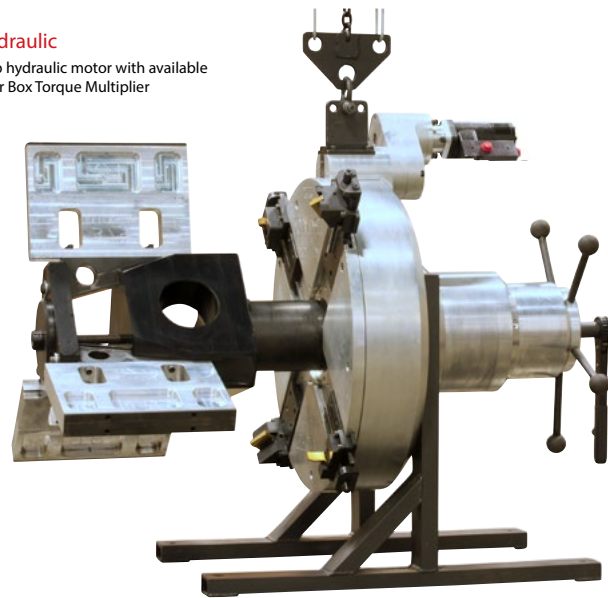
Pneumatic

5 hp pneumatic motor with available Gear Box Torque Multiplier



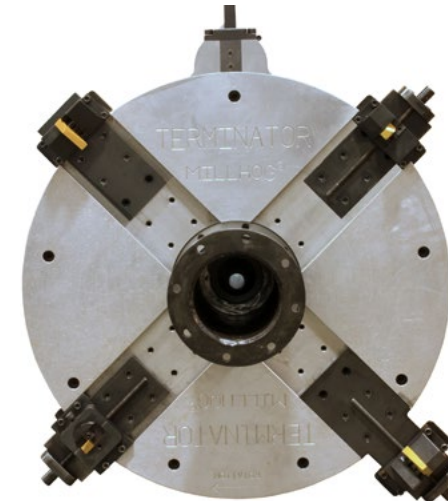
Hydraulic

5 hp hydraulic motor with available Gear Box Torque Multiplier

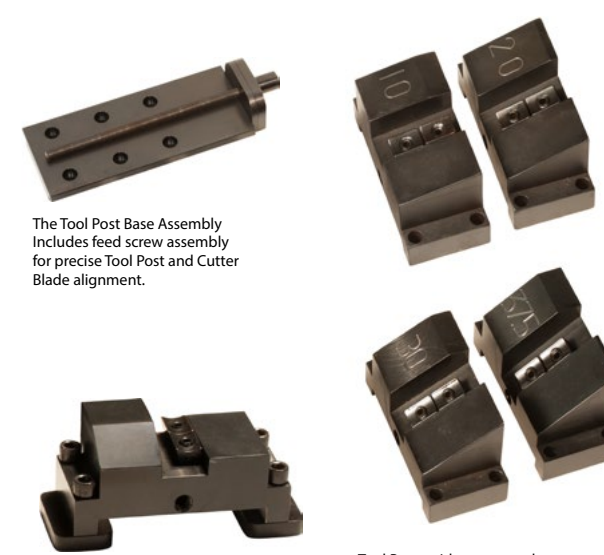


Terminator MILLHOG®

I.D. Clamping Pipe Beveling tool
8.75" I.D. to 36" O.D.
222.25 mm I.D. to 914.4 mm O.D.



The Terminator has four positions for cutting tools. Each position accepts a Tool Post Base Assembly and a Tool Post. Standard equipment for the Terminator includes two Tool Post Base Assemblies and one Flat Tool Post.



The Tool Post Base Assembly Includes feed screw assembly for precise Tool Post and Cutter Blade alignment.

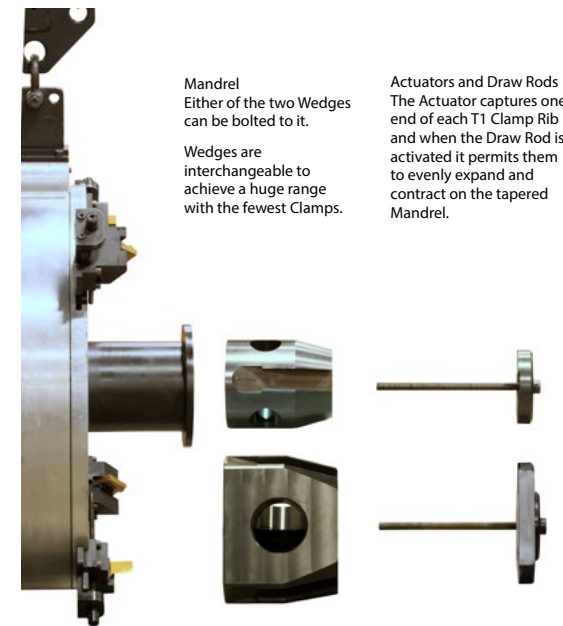
Flat Tool Posts Holds formed Cutter Blades

Tool Posts with preset angles are designed for heavy wall applications and share common Cutter Blades to achieve different angles of bevel.

Tool Post Base and Flat Tool Post with formed Cutter Blade

Tool Post Base and Angled Tool Post flat blade

Tool Post Base and adjustable height facing blade



Mandrel Either of the two Wedges can be bolted to it.

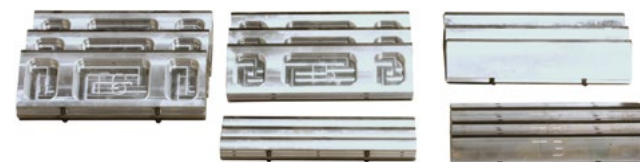
Wedges are interchangeable to achieve a huge range with the fewest Clamps.

Actuators and Draw Rods The Actuator captures one end of each T1 Clamp Rib and when the Draw Rod is activated it permits them to evenly expand and contract on the tapered Mandrel.

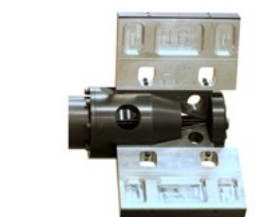


1 Clamp Rib Set The T1 Clamp Ribs are made of hardened steel. Clamp Pads and Clamp Extensions attach to them.

2 Clamp Rib Extension Sets Clamp Extensions fit between Clamp Ribs and Clamp Pads to effectively increase their range and reduce the amount of more costly Clamp Pads.



5 Clamp Pad Sets Clamp pads are made of aircraft quality aluminum and have heat treated Pad Corners that make contact with the pipe I.D. and are replaceable when worn.



Small wedge with T1 Clamp Ribs, 219 Extension and T6 Clamp Ribs



Large Wedge with T1 Clamp Ribs 314 Extension and T6 Clamp Ribs

Terminator Clamp Ribs, Pad and Extension Selector

I.D. Range (in)	I.D. Range (mm)	Clamp Combination	Wedge Part No.	Actuator Part No.	Draw Rod Part No.
8.625	10.75	219.08 273.05 T1	T-17	T-14	T-16
10.50	12.75	266.70 323.85 T1 & T2	T-17	T-14	T-16
12.50	14.75	317.50 374.65 T1 & T3	T-17	T-14	T-16
14.50	16.75	368.30 425.45 T1 & T4	T-17	T-14	T-16
16.50	18.75	419.10 476.25 T1 & T5	T-17	T-14	T-16
18.50	20.75	469.90 527.05 T1 & T-219 Extension & T2	T-17	T-14	T-16
20.50	22.75	520.70 577.85 T1 & T-219 Extension & T3	T-17	T-14	T-16
22.50	24.75	571.50 628.65 T1 & T-219 Extension & T4	T-17	T-14	T-16
24.50	26.75	622.30 679.45 T1 & T-219 Extension & T5	T-17	T-14	T-16
14.75	16.25	374.65 412.75 T1	T-18	T-15	T-16
16.00	18.50	406.40 469.90 T1 & T2	T-18	T-15	T-16
18.00	20.50	457.20 520.70 T1 & T3	T-18	T-15	T-16
20.00	22.50	508.00 571.50 T1 & T4	T-18	T-15	T-16
22.00	24.50	558.80 622.30 T1 & T5	T-18	T-15	T-16
24.00	26.50	609.60 673.10 T1 & T6	T-18	T-15	T-16
26.00	28.50	660.40 723.90 T1 & T-374 Extension & T2	T-18	T-15	T-16
28.00	30.50	711.20 774.70 T1 & T-374 Extension & T3	T-18	T-15	T-16
30.00	32.50	762.00 825.50 T1 & T-374 Extension & T4	T-18	T-15	T-16
32.00	34.50	812.80 876.30 T1 & T-374 Extension & T5	T-18	T-15	T-16
34.00	36.50	863.60 927.10 T1 & T-374 Extension & T6	T-18	T-15	T-16

Specifications: Terminator

Working Range	8.625in (219 mm) I.D. to 36in (914.4 mm) O.D.
Motor	Pneumatic 5 hp (3728 W) 90 psi (6.2 bar) 95 cfm (2690 l/min)
	Hydraulic 5 HP / 8-12 gpm (30.3-45.4 l/min) @ 1500 psi (102 bar) 20 gal (75.7 l) reservoir
Speed	4 rpm
Speed with Off-Set Gear Reducer	2 rpm with gear reducer
Minimum Clearance	30in (762 mm)
Head Length	50in (1270 mm)
Working Weight	700 lbs (318 kg)
Shipping Weight	1375 lbs (623.7 kg)
Shipping Dimensions	36in x 54in x 48in
	915 mm x 1372 mm x 1219 mm